

1
2
3
4
5
6

EASEE-gas

European Association for the Streamlining of Energy Exchange - gas

Harmonised Gas Role Model Specification

7

Number:	2016-001/01.1
Subject:	Harmonised Gas Role Model
Approved:	12 September 2016
Ratified:	09 November 2016

8
9

Summary

This document identifies and defines the different roles carried out within the gas market.

10 **About EASEE-gas**

11

12 *The European Association for the Streamlining of Energy Exchange-gas or EASEE-gas was*
13 *created by six founding members in Paris on March 14th, 2002. EASEE-gas's aim is to*
14 *support the creation of an efficient and effective European gas market through the*
15 *development and promotion of common business practices (CBPs) that intend to simplify*
16 *and streamline business processes between the stakeholders. EASEE-gas has set up offices*
17 *with Association Française du Gaz who provide administrative support.*

18 *The formation of EASEE-gas was prompted by the success of the Gas Industry Standards*
19 *Board in the United States and has been modelled on it. The GISB has now evolved into the*
20 *North American Energy Standards Board. The creation of EASEE-gas is a project that is fully*
21 *supported by the European Commission and by the European Regulators through the so-*
22 *called Madrid Forum. It was achieved through the work of a dedicated Task Force supported*
23 *by EFET, Eurogas, Eurelectric, GEODE, GTE, OGP and the Edigas group.*

24 *The association is fundamentally based on company membership and voluntary contribution*
25 *towards the development of common business practices.*

26 *Full membership in EASEE-gas is open to all companies, European or other, that are*
27 *involved in the European gas business, from producers to end users, and to companies that*
28 *are their service providers. Companies can subscribe to full membership in one or more of*
29 *the eight gas industry segments.*

30 *Associate membership in EASEE-gas is open to government agencies, e.g., regulators, to*
31 *organisations such as gas business trade associations and to individuals that may contribute*
32 *to the benefit of EASEE-gas. Associate members do not pay annual fees, nor do they have*
33 *voting rights.*

34 *The development of common business practices within EASEE-gas is organised through*
35 *working groups under the supervision of an executive committee that is representative of*
36 *the various gas industry segments. Participation in the working groups is limited to members*
37 *only.*

EASEE-gas Association loi 1901

12 Tour Opus, La Défense 9, 77, Esplanade du General de Gaulle, La Défense, 92914 Paris, France

Tel: +32 2 761 16 33 Fax: +32 2 761 16 99 Mail: easee-gas@kelleneurope.com

Web: <https://easee-gas.eu/>

38

Table of contents

39	1	Role Model Detail	5
40	1.1	Harmonised Gas Role Model	5
41	1.1.1	Aims of the model	5
42	1.1.2	How the role model was developed	5
43	1.1.3	Explanation of roles and parties	5
44	1.1.4	How to read the role model, how is it structured	5
45	2	Overview of the roles in the model	7
46	2.1	Allocation Responsible active and passive.....	9
47	2.2	Area Coordinator active and passive	10
48	2.3	Balance Responsible Party active and passive.....	11
49	2.4	Balancing Energy Responsible active and passive	12
50	2.5	Capacity Responsible Party active and passive.....	13
51	2.6	Capacity Platform Responsible active and passive	14
52	2.7	Clearing Responsible active and passive.....	15
53	2.8	Distribution System Operator active and passive.....	16
54	2.9	Energy Trading Platform Responsible active and passive.....	17
55	2.10	Final Customer passive	18
56	2.11	LNG System Operator active and passive	19
57	2.12	Market Information Aggregator passive.....	20
58	2.13	Metered Data Responsible active and passive	21
59	2.14	Meter Operator active	22
60	2.15	Production System Operator active and passive	23
61	2.16	Reconciliation Responsible active and passive	24
62	2.17	Storage System Operator active and passive	25
63	2.18	Supplier active and passive	26
64	2.19	Trader active and passive.....	27
65	2.20	Transmission System Operator active and passive.....	28
66	3	Document change log	30
67			

68 **Table of figures**

69	Figure 1: Overview of the role model	8
70	Figure 2: Allocation Responsible	9
71	Figure 3: Area Coordinator	10
72	Figure 4: Balance Responsible Party passive	11
73	Figure 5: Balance Responsible Party active.....	11
74	Figure 6: Balancing Energy Responsible.....	12
75	Figure 7: Capacity Responsible Party	13
76	Figure 8: Capacity Platform Responsible	14
77	Figure 9: Clearing Responsible	15
78	Figure 10: Distribution System Operator	16
79	Figure 11: Energy Trading Platform Responsible	17
80	Figure 12: Final Customer	18
81	Figure 13: LNG System Operator	19
82	Figure 14: Market Information Aggregator	20
83	Figure 15: Metered Data Responsible	21
84	Figure 16: Meter Operator.....	22
85	Figure 17: Production System Operator	23
86	Figure 18: Reconciliation Responsible	24
87	Figure 19: Storage System Operator.....	25
88	Figure 20: Supplier	26
89	Figure 21: Trader.....	27
90	Figure 22: Transmission System Operator passive	28
91	Figure 23: Transmission System Operator active	29
92		

93 **1 Role Model Detail**

94 This document provides an overview of the harmonised gas role model.

95 **1.1 Harmonised Gas Role Model**

96 **1.1.1 Aims of the model**

97 The Role Model has been developed to represent actions between different market participants in the gas
98 industry. The main focus of this document is on information exchange between market participants (excluding
99 contractual relations). This document is not legally binding. The aim of the document, however, is to provide a
100 common terminology for the roles that are used among most European countries.

101 The Model is only applicable for the Gas Market and not for other Energy segments. It has been developed by
102 Easee-gas with input from ENTSOG and Eurogas.

- 103 • Focus has been set on generic roles and not on local and national particularities.
- 104 • In the current version of this document, the number of roles has been restricted in order to ensure a
105 good understanding for the readers.
- 106 • Edigas version 6 and subsequent versions containing the Message Implementation Guidelines are going
107 to use the roles and interactions defined in the role model.

108 **1.1.2 How the role model was developed**

109 Roles were selected based on the existing descriptions of business processes in the gas market (ENTSOG BRS;
110 EASEE-GAS CBP and MIG as well as Task Force participant input). European regulations and common aspects
111 of national regulations were also considered.

112 For the identified roles, interactions were selected based on their need for common communication with other
113 roles. Legal aspects (e.g. contractual relations) were not taken into account.

114 A concrete example is the relation between a Network User and a Shipper: Such roles are important within the
115 gas market. However in many instances there is an overlap between them. In order to eliminate such confusion
116 it was decided to employ the terms Balance Responsible Party and Capacity Responsible Party in their place.

117 LNG / Storage / Production plants: The model stops at the level of LNG Operator / Storage Operator /
118 Production System Operator and will not go behind this. If it appears necessary, detailing activities beyond these
119 points should be kept for a future version of the role model.

120 **1.1.3 Explanation of roles and parties**

121 Roles describe external business interactions with other roles in relation to the goal of a given business
122 transaction.

123 A party on the market may play several roles, for example a System Operator may play both the role of Area
124 Coordinator and the role of TSO. However two different roles have been defined since these roles are not
125 always played by the same party.

126 The different roles and interactions have been identified within the current business process at a certain moment
127 of time. Any evolution or change in these processes could lead to an update of the Role Model.

128 **1.1.4 How to read the role model, how is it structured**

129 Figure 1 provides an overview of the role model diagram. It presents all of the roles and, in order to facilitate
130 readability, only some of the major interactions between them. The diagram should help to provide a general
131 overview of the role model. For more detailed information, specific diagrams are provided that represent a view
132 of each role and the major information flows that may occur with other roles. There are three different types of
133 view provided:

- 134 1. A view that contains both the passive and active interactions.
- 135 2. A view that is termed "passive" where only the interactions that are going "to" the role being
136 described are present.
- 137 3. A view that is termed "active" where only the interactions that are going "from" the role being
138 described are present.

139 Initially the role model was created with a passive and an active view for each role. These views were developed
140 in order to provide a clear picture of the interactions. However, in some circumstances there may only be one of

141 the views in the case where the opposing view is not significant. The "general" view is now provided for most of
142 the roles, with focus placed on simplicity and readability.

143 **2 Overview of the roles in the model**

144 The overview provides a perspective of the role model making use of only one interaction between each pair of roles in order to avoid clutter in the diagram.

145 The interaction chosen may not necessarily be significant to some but the objective is simply to place the roles in the diagram.

148 **2.1 Allocation Responsible active and passive**

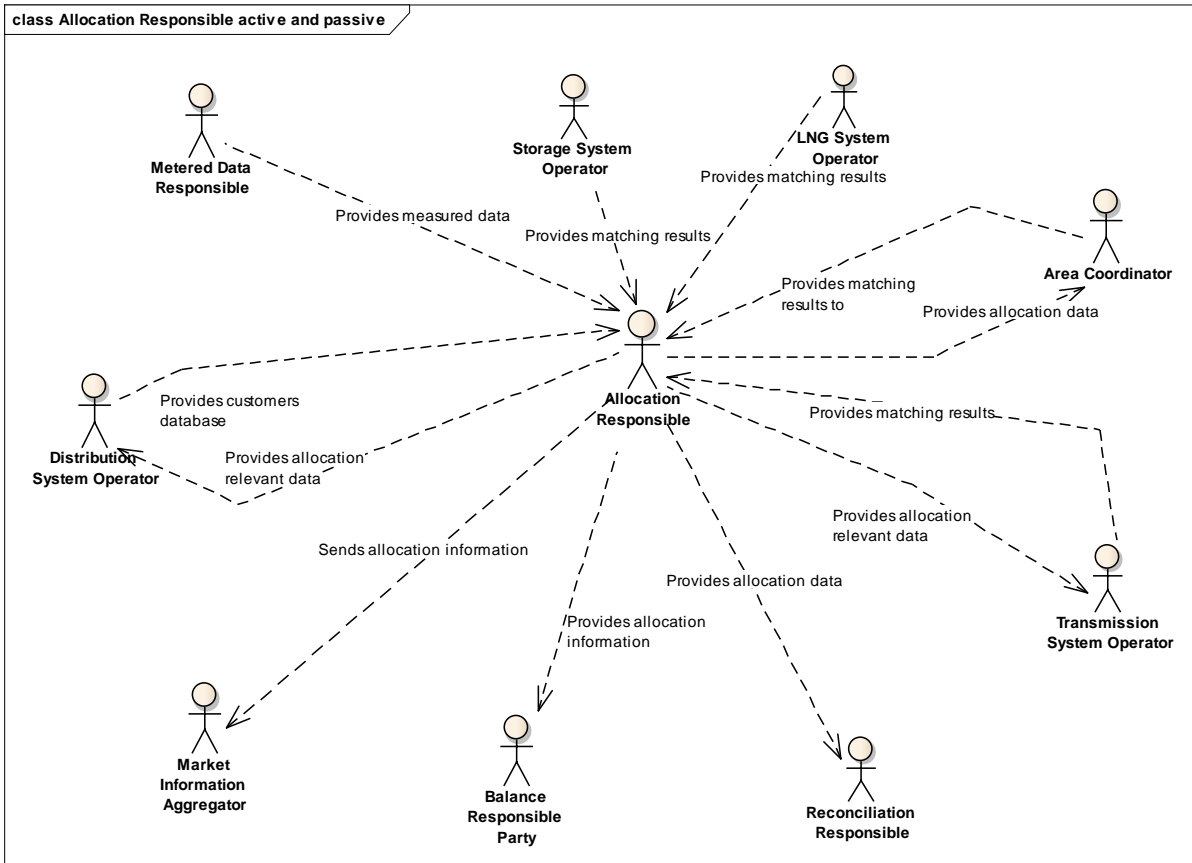
149

RoleName Allocation Responsible

RoleDescription A party allocating energy to portfolios based on agreed procedures.

150

151



152

153

Figure 2: Allocation Responsible

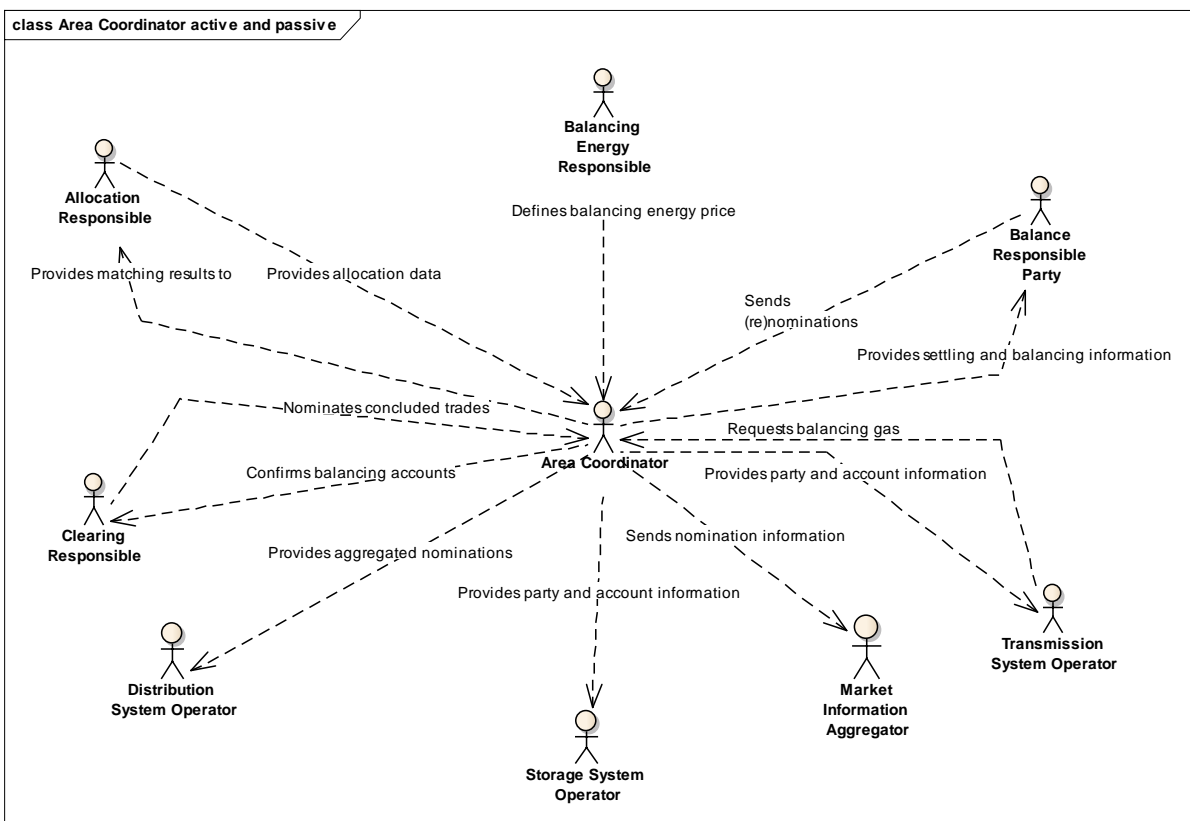
154 **2.2 Area Coordinator active and passive**

155
156

RoleName Area Coordinator
 RoleDescription A party with coordinating functions in the transmission and/or distribution system and responsibilities for the management of balancing groups, system balancing activities and/or the provision of data (for example settlement and balancing information). Other duties and responsibilities might be stipulated in the respective national laws.

Additional information:
 In some countries some additional duties might be assumed by the area coordinator, for instance: Coordination of infrastructure planning and maintenance activities, congestion management,...

157
158



159
160

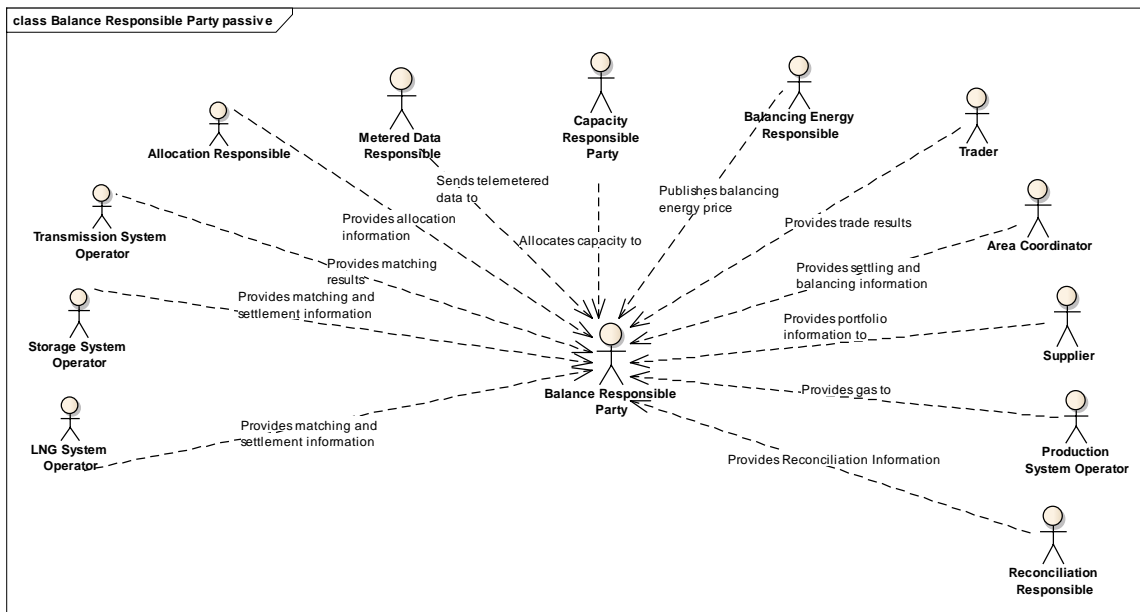
Figure 3: Area Coordinator

161 **2.3 Balance Responsible Party active and passive**

162
163

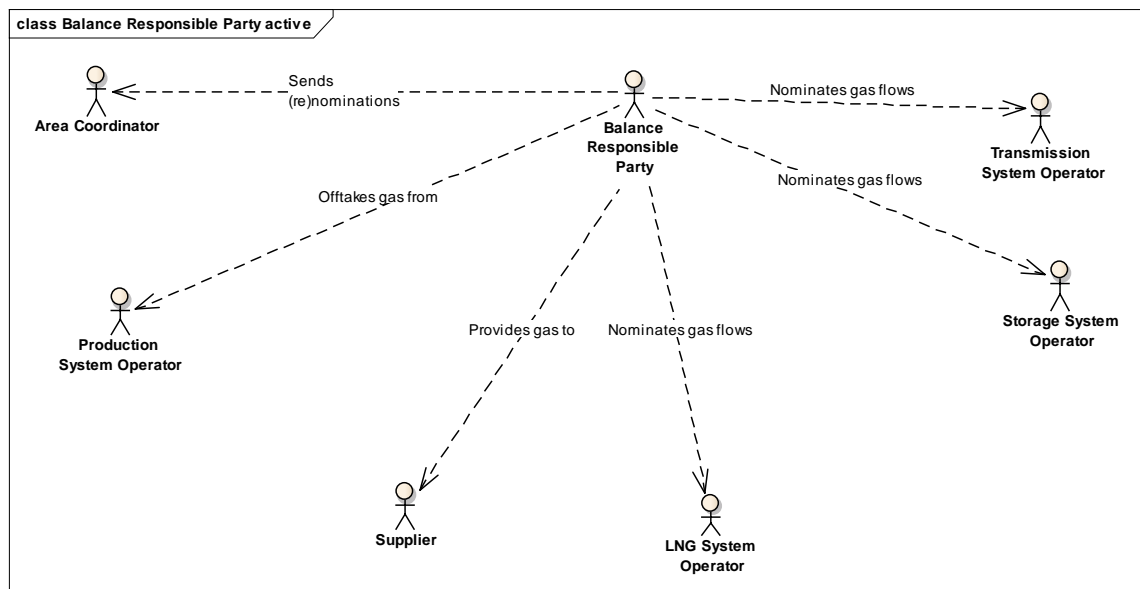
RoleName	Balance Responsible Party
RoleDescription	A party that manages its own portfolio and/or the portfolios on behalf of other parties and is financially responsible for the account imbalance.

164
165



166
167
168

Figure 4: Balance Responsible Party passive



169
170

Figure 5: Balance Responsible Party active

171 **2.4 Balancing Energy Responsible active and passive**

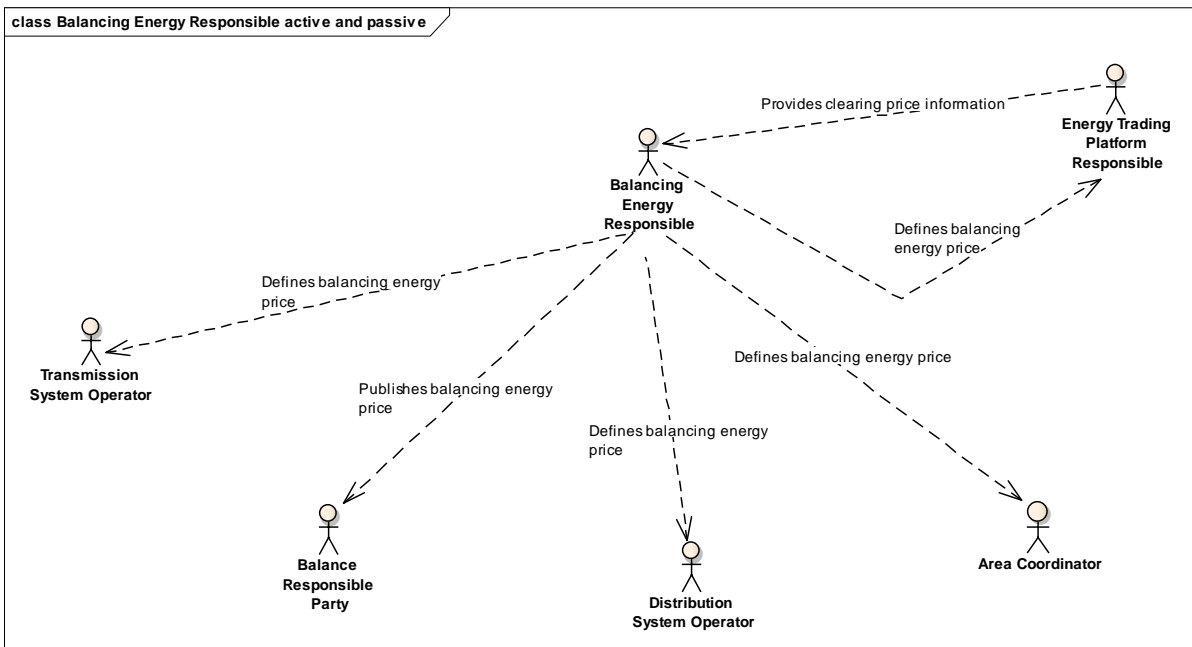
172

173

RoleName Balancing Energy Responsible
 RoleDescription A party responsible for the price formation for balancing energy in the network.

174

175



176

177

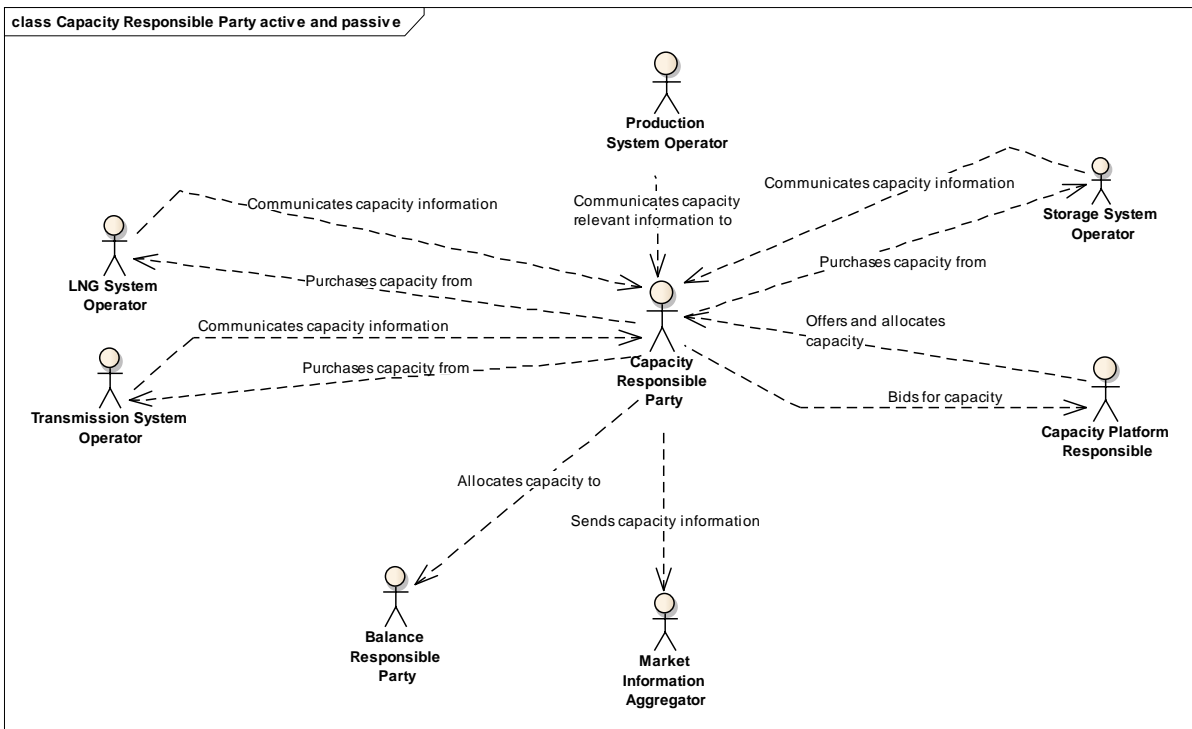
Figure 6: Balancing Energy Responsible

178 **2.5 Capacity Responsible Party active and passive**

179
180

RoleName Capacity Responsible Party
RoleDescription A party that employs the System Operator to transport the gas.

181
182



183
184

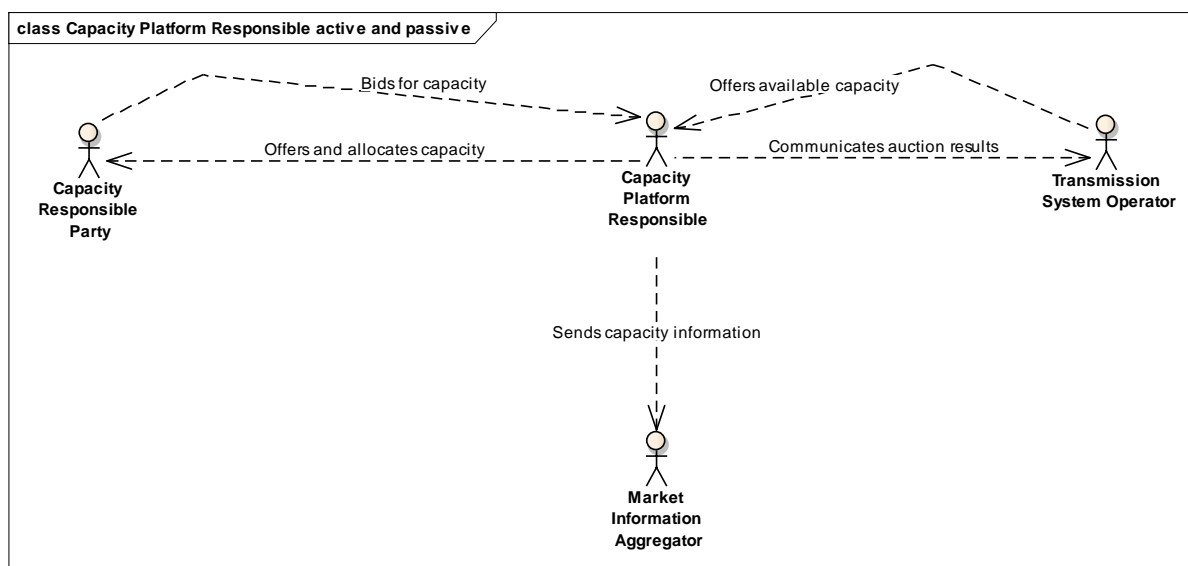
Figure 7: Capacity Responsible Party

185 **2.6 Capacity Platform Responsible active and passive**

186
187

RoleName Capacity Platform Responsible
 RoleDescription A party providing and operating a platform that implements the rules and processes for offering and allocation of all capacity products and/or may permit Capacity Responsible Parties to offer and obtain secondary capacity products.

188
189



190
191

Figure 8: Capacity Platform Responsible

192 **2.7 Clearing Responsible active and passive**

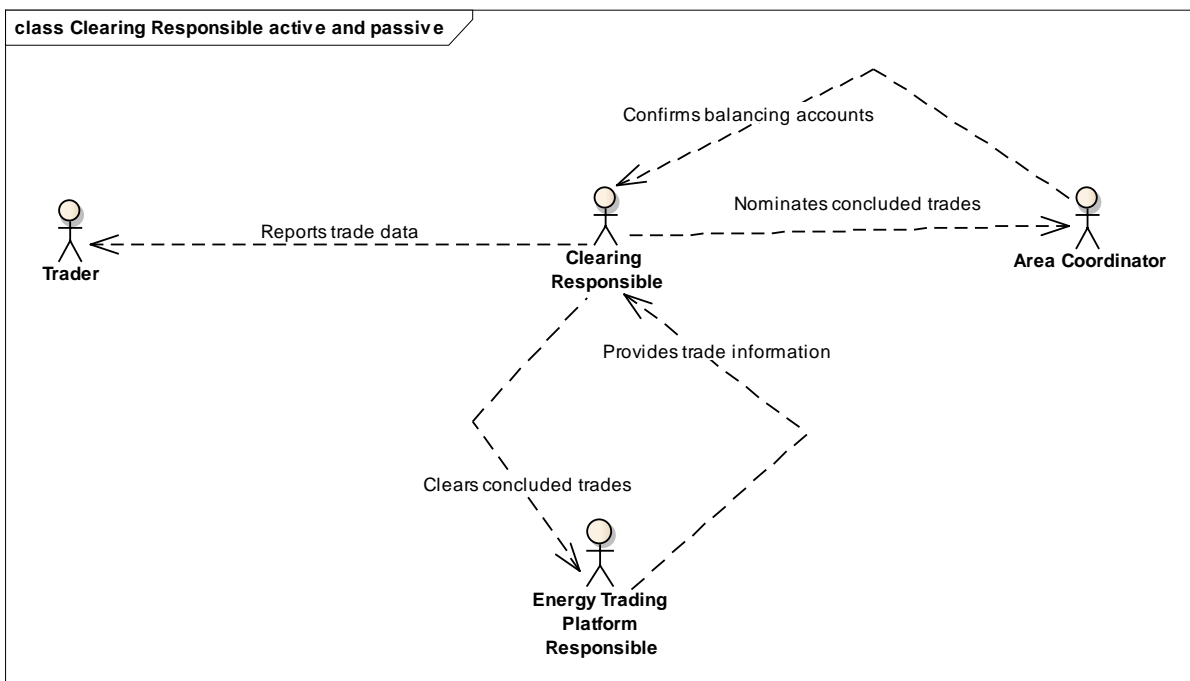
193
194

RoleName Clearing Responsible
 RoleDescription A party being a Clearing House to settle trades concluded on the Energy Trading platform or trades registered directly at the Clearing House for clearing by means of special rights as single sided or on-behalf nominations.

Additional information:

A Clearing Responsible nominates gas based on concluded transactions on the Energy Trading Platform for the relevant Traders to the relevant Area Coordinator via the Trader's chosen Balance Responsible Party.

195
196



197
198

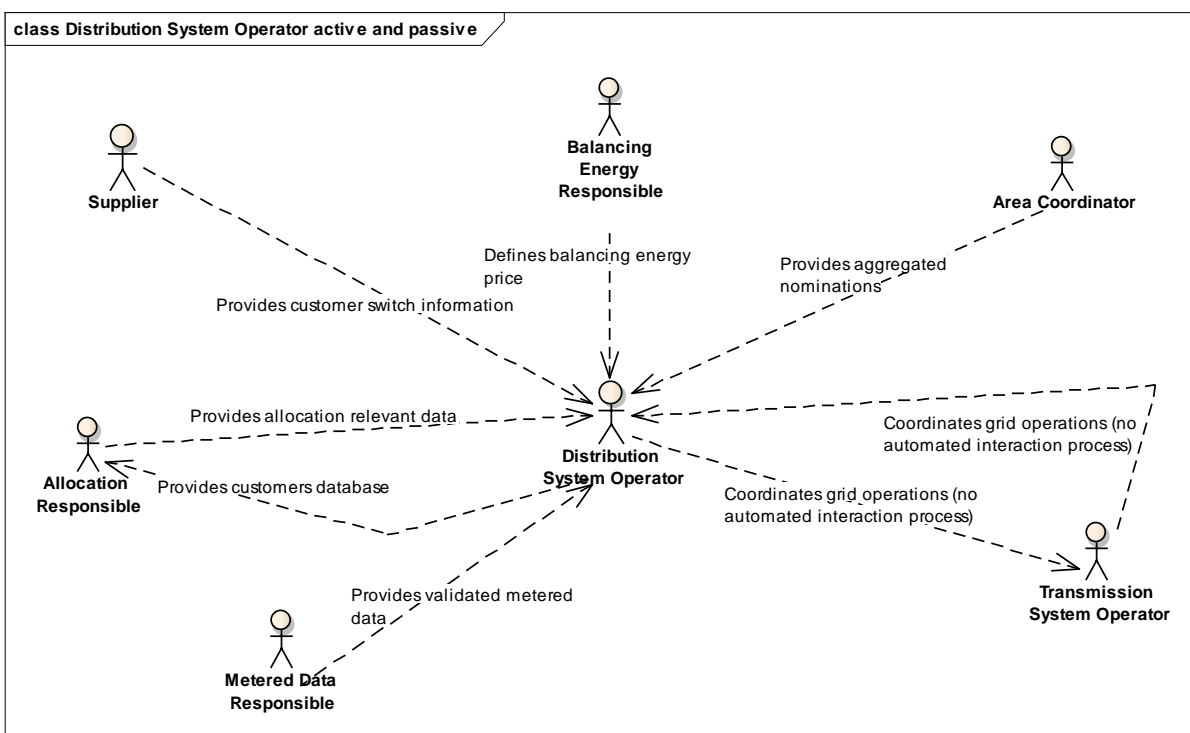
Figure 9: Clearing Responsible

199 **2.8 Distribution System Operator active and passive**

200
201

RoleName Distribution System Operator
 RoleDescription A party who carries out the function of distribution and is responsible for operating, ensuring the maintenance of, and, if necessary, developing the distribution system in a given area and, where applicable, its interconnections with other systems, and for ensuring the long-term ability of the system to meet reasonable demands for the distribution of gas (This definition can be found in the Directive 73/2009).

202



203
204

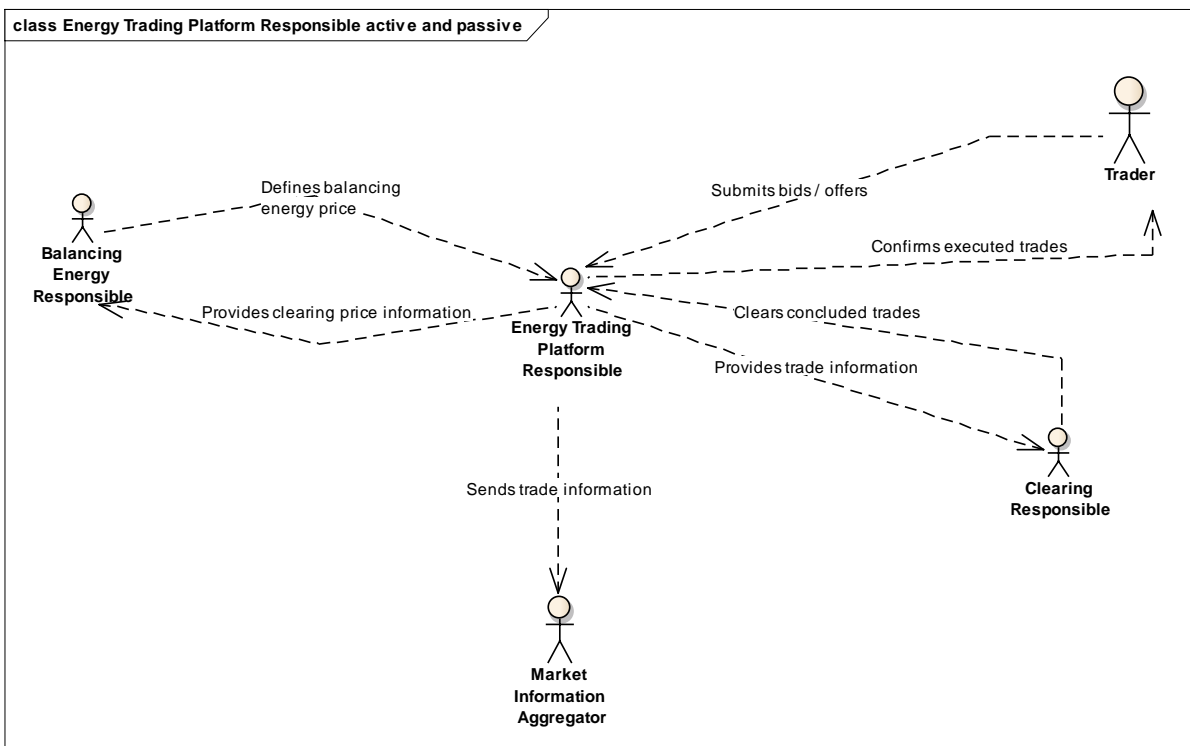
Figure 10: Distribution System Operator

205 **2.9 Energy Trading Platform Responsible active and passive**

206
207

RoleName Energy Trading Platform Responsible
 RoleDescription A party providing and operating a platform by means of which trading participants may post and accept bids and offers for gas in accordance with the terms and conditions applicable on the trading platform.

208
209



210
211

Figure 11: Energy Trading Platform Responsible

2.10 Final Customer passive

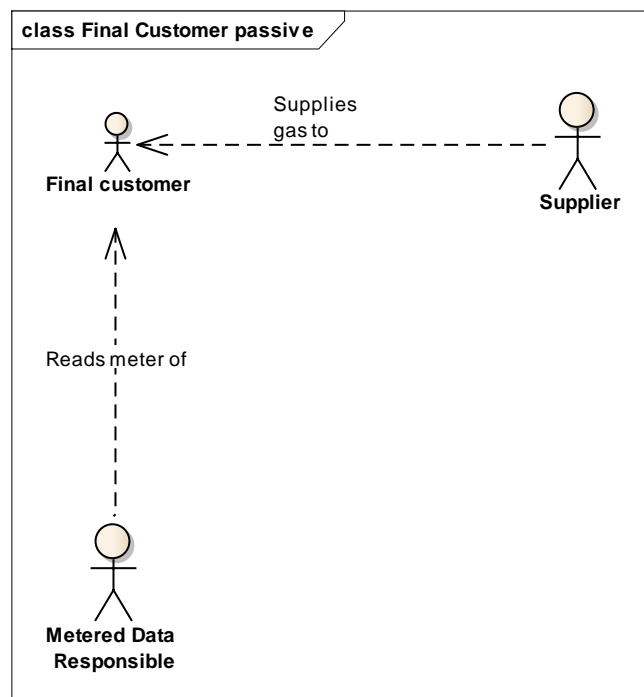
212
213
214

RoleName Final customer
RoleDescription A party purchasing gas for its own use. (This definition can be found in the Directive 73/2009).

Additional information:

Includes gas consumers and electricity producer. Same as "end-user" in other documents.

215
216



217
218

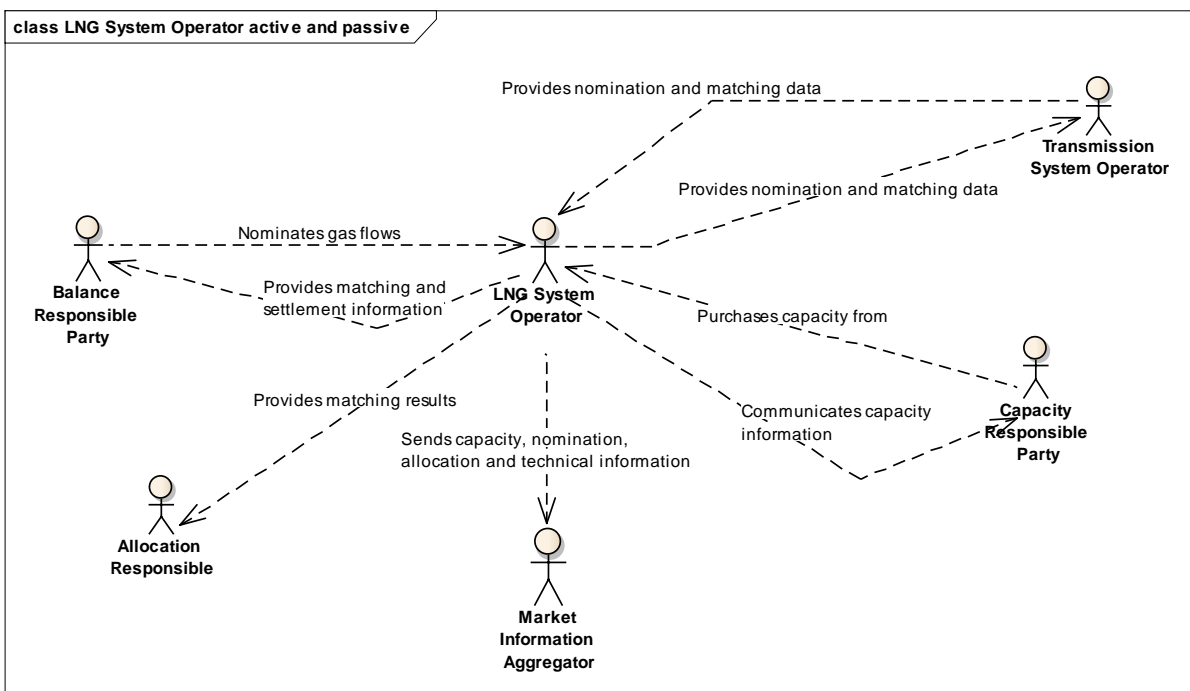
Figure 12: Final Customer

219 **2.11 LNG System Operator active and passive**

220
221

RoleName LNG System Operator
RoleDescription A party who carries out the function of liquefaction of natural gas, or the offloading, and re-gasification of LNG and is responsible for operating a LNG facility. (This definition can be found in the Directive 73/2009).

222
223



224
225

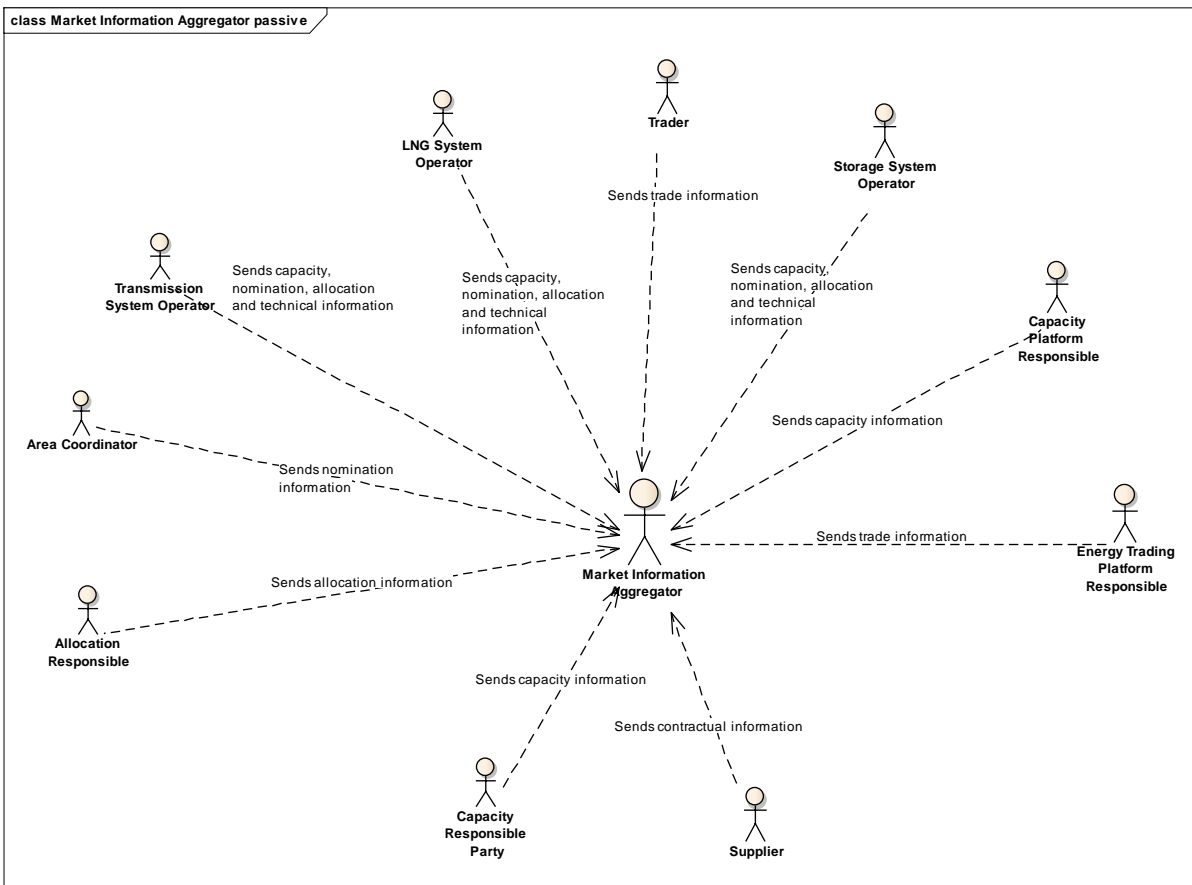
Figure 13: LNG System Operator

226 **2.12 Market Information Aggregator passive**

227
228

RoleName Market Information Aggregator
 RoleDescription A party that receives market related information that has been compiled from the figures supplied by different actors in the market. This Information may also be published or distributed for general use. It could be EU regulator, national regulator, ENTSOG as transparency platform responsible, TSO/SSO/LSO's transparency platform, ...

229
230



231
232

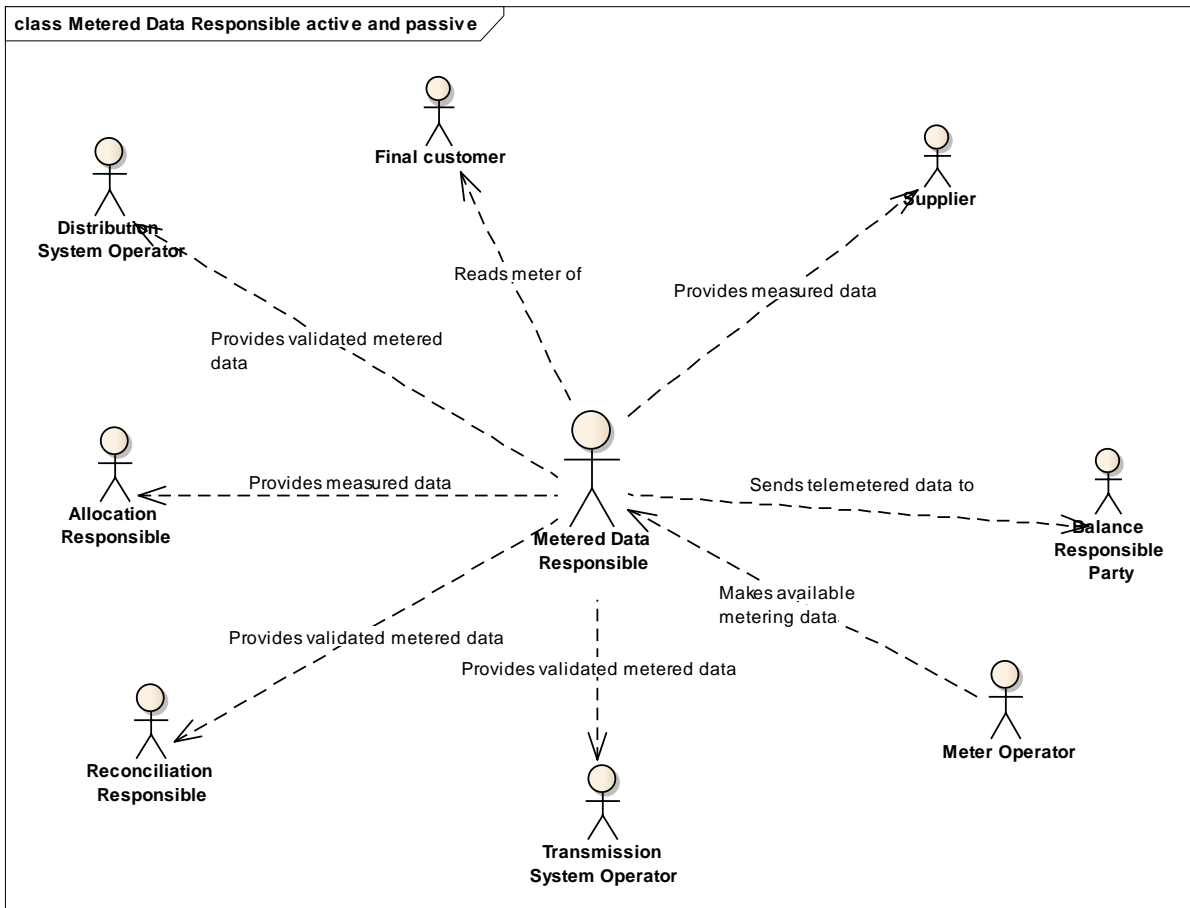
Figure 14: Market Information Aggregator

233 **2.13 Metered Data Responsible active and passive**

234
235

RoleName Metered Data Responsible
 RoleDescription A party responsible for the collection, validation, aggregation and making available metered data.

236
237



238
239

Figure 15: Metered Data Responsible

240 **2.14 Meter Operator active**

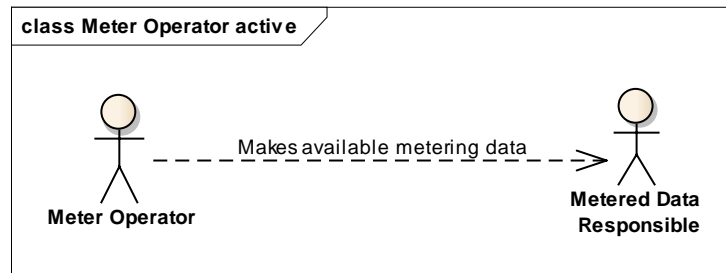
241

242

RoleName Meter Operator
RoleDescription A party responsible for installing, maintaining, testing, certifying and decommissioning physical meters.

243

244



245

246

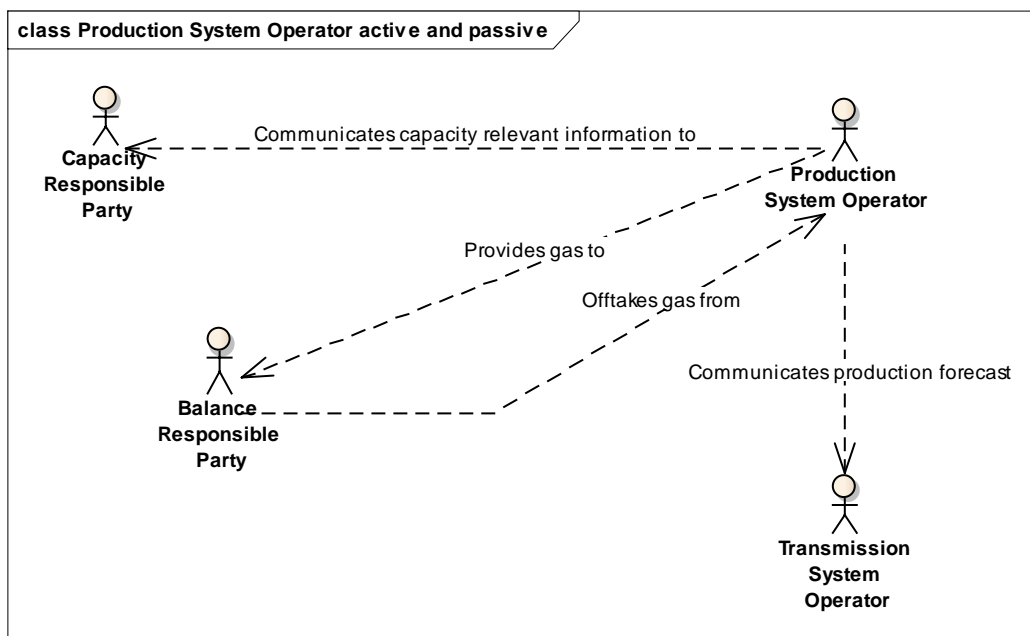
Figure 16: Meter Operator

247 **2.15 Production System Operator active and passive**

248
249

RoleName Production System Operator
RoleDescription A party that manages gas production within a production facility.

250
251



252
253

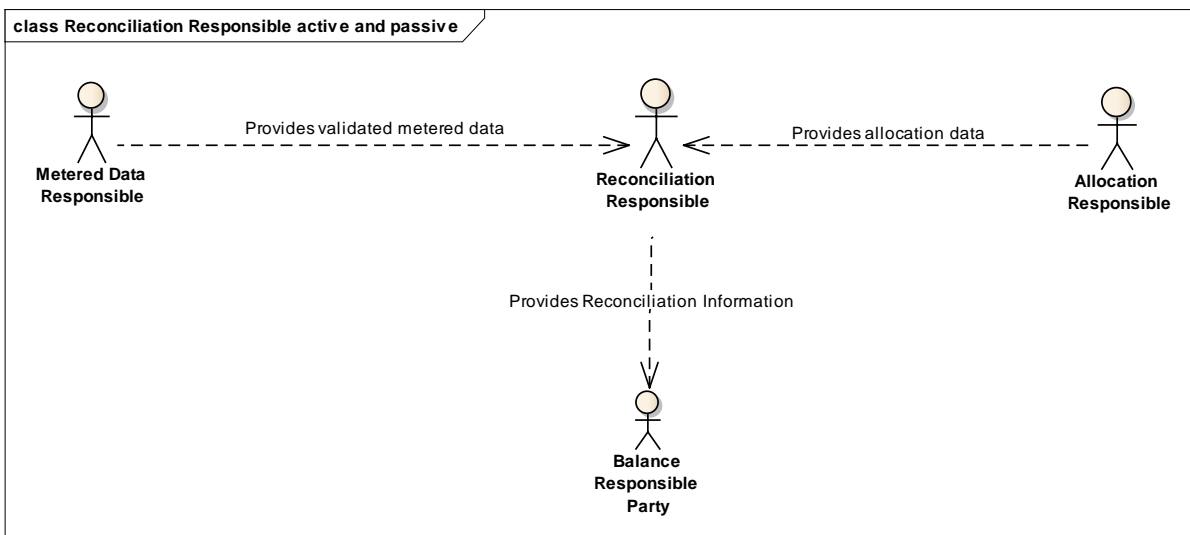
Figure 17: Production System Operator

254 **2.16 Reconciliation Responsible active and passive**

255
256

RoleName Reconciliation Responsible
 RoleDescription A party that is responsible for reconciling, within a given network, the energy used in the imbalance settlement process for portfolios and the actual metered quantities.

257
258



259
260

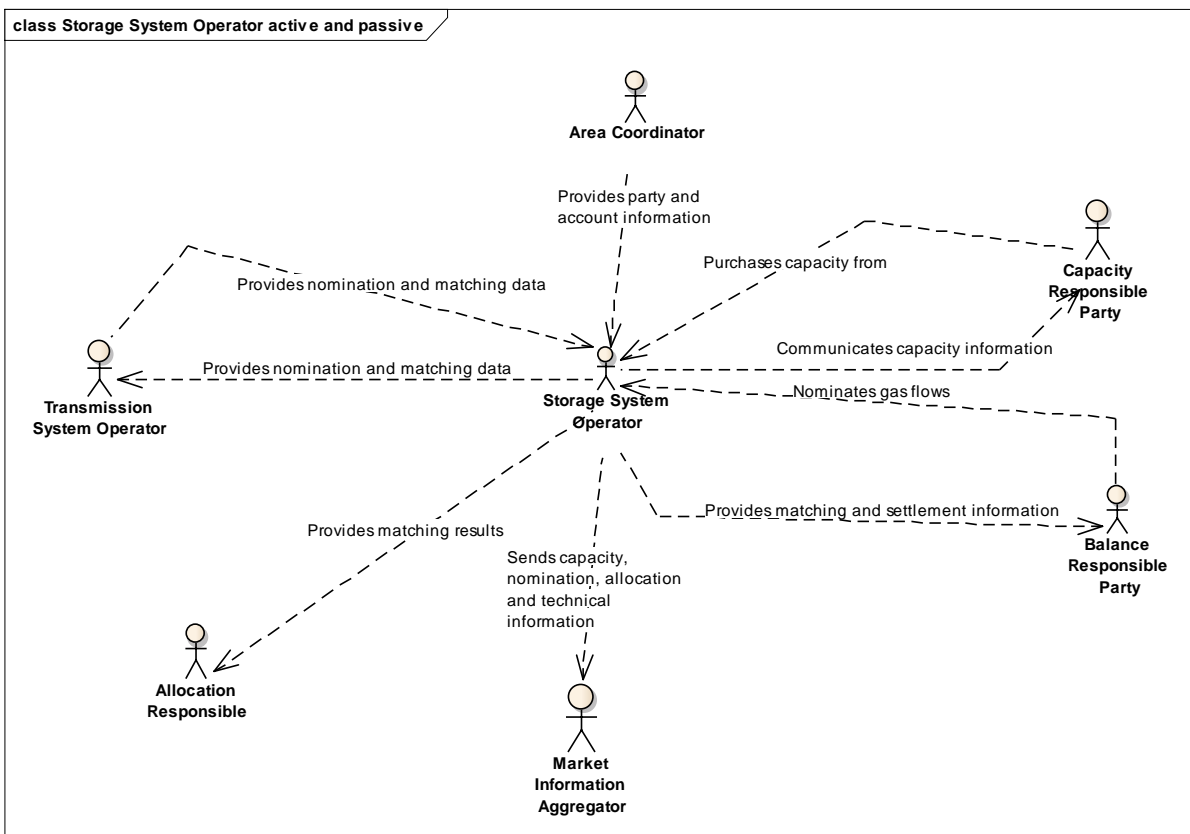
Figure 18: Reconciliation Responsible

261 **2.17 Storage System Operator active and passive**

262
263

RoleName Storage System Operator
 RoleDescription A party who carries out the function of storage and is responsible for operating a storage facility. (This definition can be found in the Directive 73/2009).

264
265



266
267

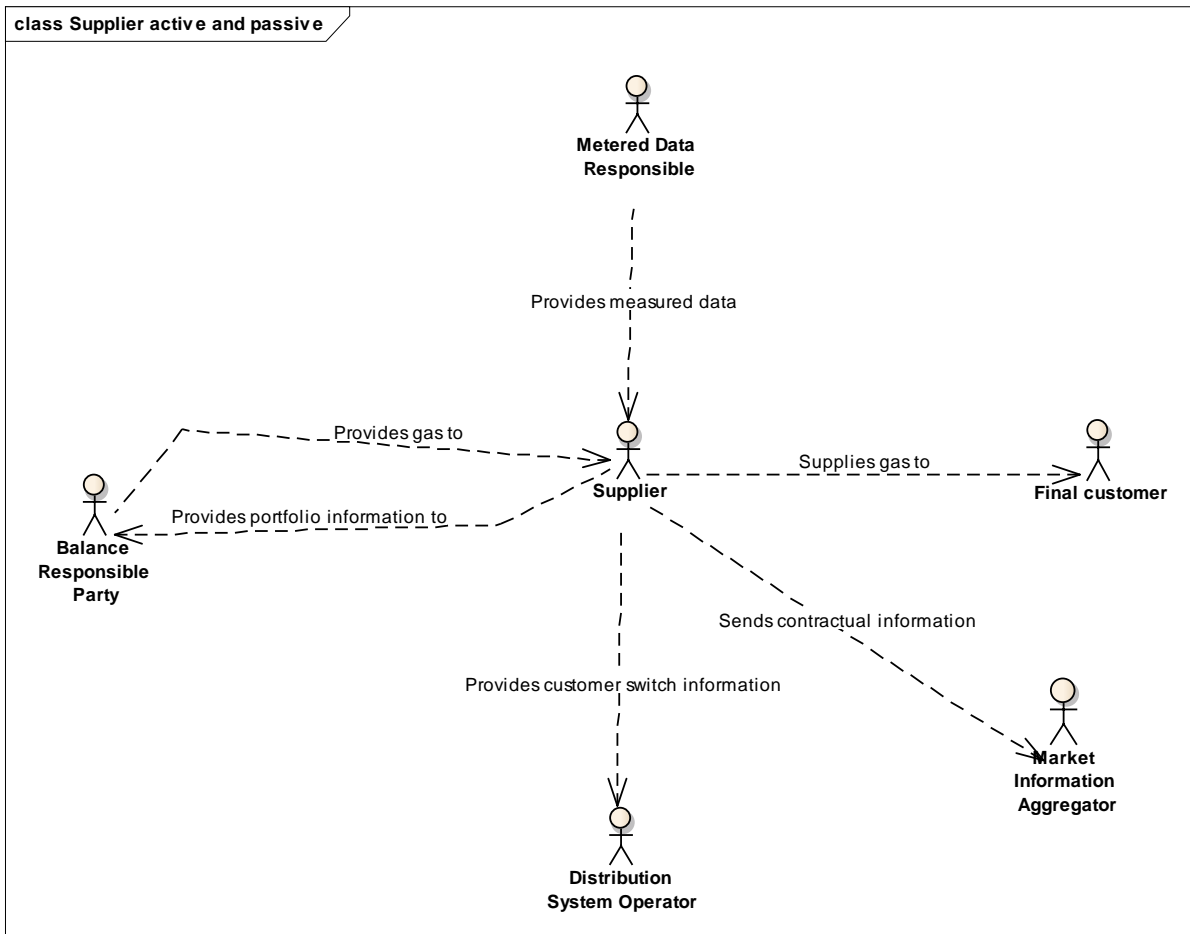
Figure 19: Storage System Operator

268 **2.18 Supplier active and passive**

269
270

RoleName	Supplier
RoleDescription	A party who carries out the function of supply (the sale, including resale, of gas to final customers).

271
272



273
274

Figure 20: Supplier

275 **2.19 Trader active and passive**

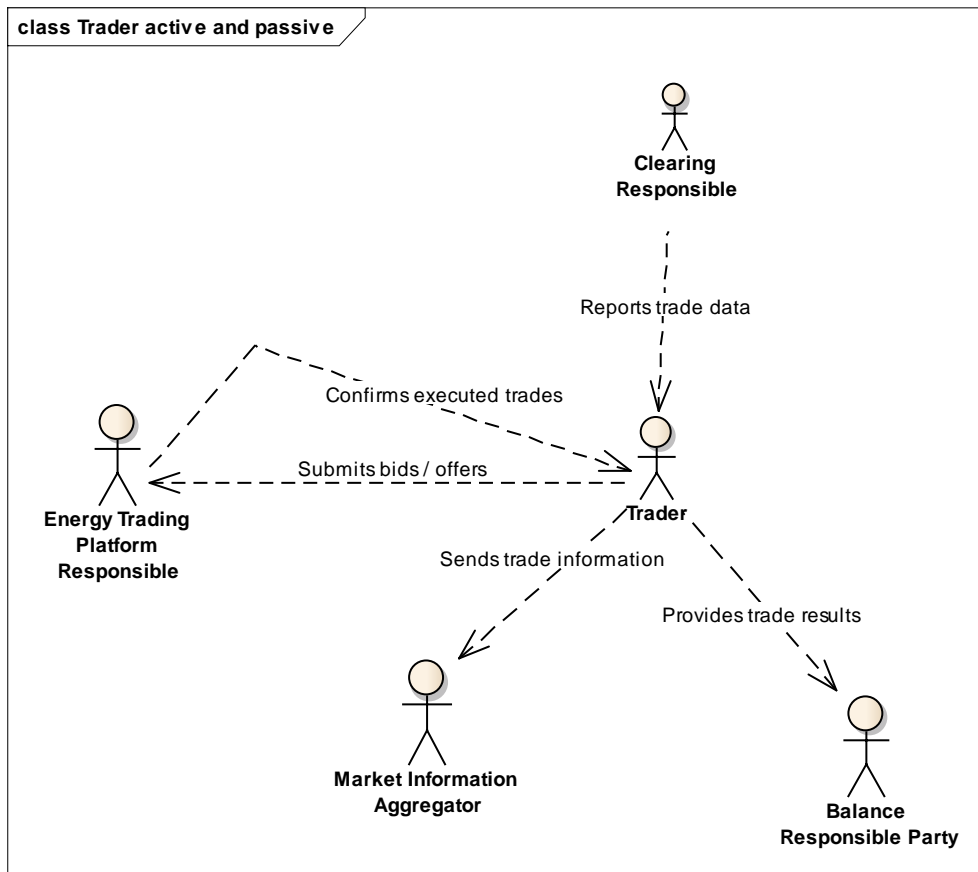
276
277

RoleName Trader
RoleDescription A party responsible for buying and selling gas on an energy trading platform (virtual or physical).

Additional information:

A trader does not interact with the Area Coordinator for nominations.

278
279



280
281

Figure 21: Trader

282 **2.20 Transmission System Operator active and passive**

283

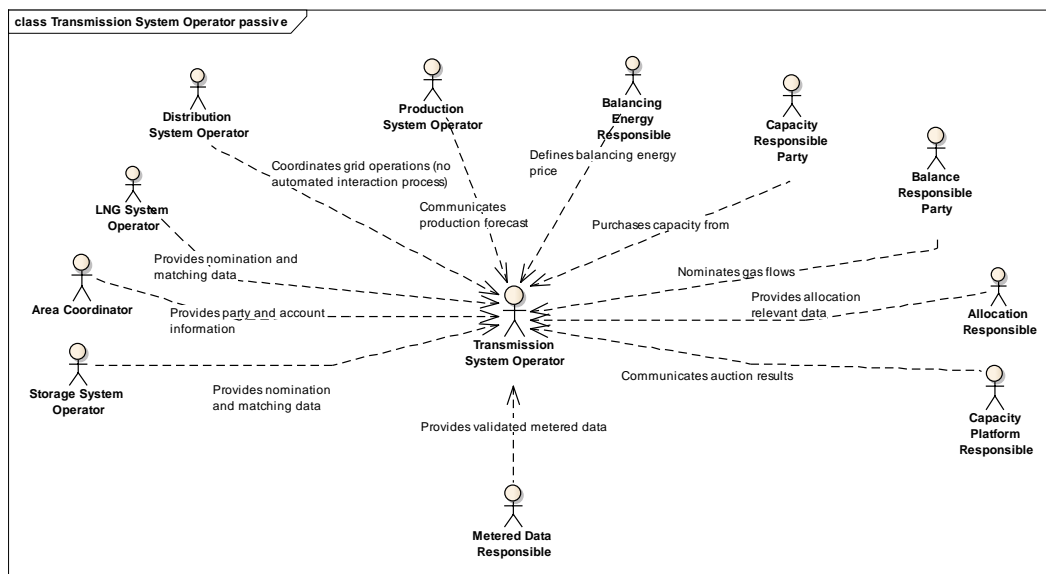
RoleName Transmission System Operator
 RoleDescription A party who carries out the function of transmission and is responsible for operating, ensuring the maintenance of, and, if necessary, developing the transmission system in a given area and, where applicable, its interconnections with other systems, and for ensuring the long-term ability of the system to meet reasonable demands for the transport of gas. (This definition can be found in the Directive 73/2009).

Additional information:

Roles which are not related to grid operation are covered elsewhere in the model.

284

285



286

287

Figure 22: Transmission System Operator passive

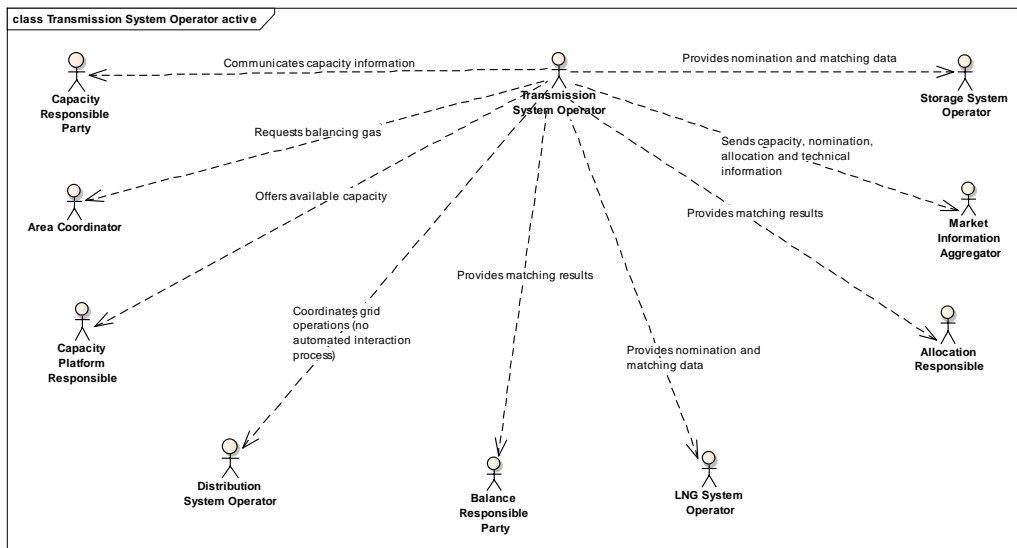


Figure 23: Transmission System Operator active

288
289

290 **3 Document change log**

Version	Date	Description
1	2016-10-11	First release of the harmonised role model after approval.
1.1	2016-11-09	- Correction of additional interactions in figure 4 - Correction of missing interactions in figures 13, 19 - Correction of naming in figures 13, 19 - Correction of definition Clearing Responsible

291