

The background of the slide is a complex, glowing network of interconnected nodes and lines. The nodes are represented by small, bright spheres in shades of yellow, orange, and blue, while the connecting lines are thin, golden-brown threads. The overall effect is a dense, three-dimensional web of light against a dark blue background.

Streamlining the gas business



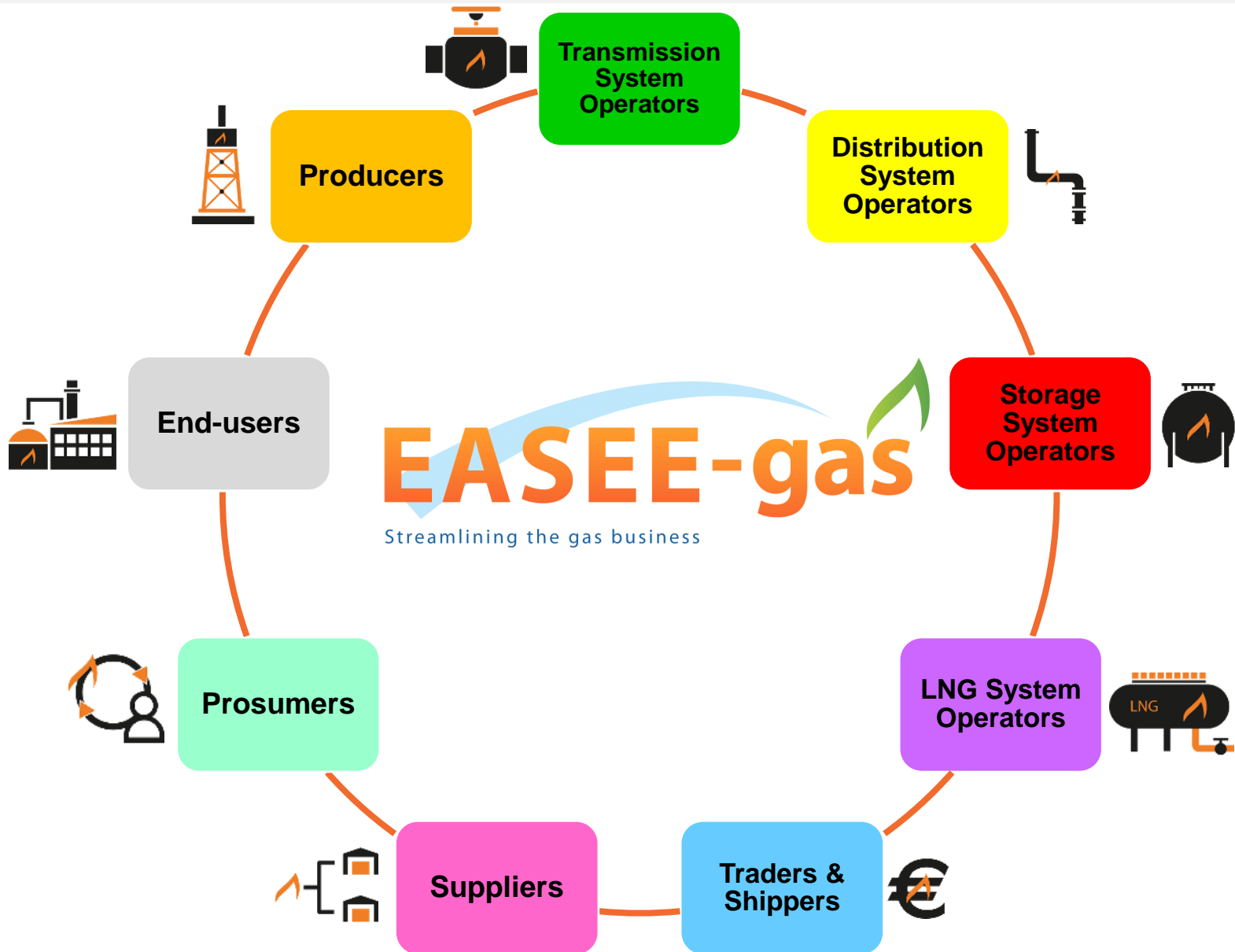
EASEE-gas promotes and develops solutions for the simplification and streamlining of the trading and physical transfer of gas.

**FOUNDED IN
2002**

**80+
EUROPEAN
MEMBERS**



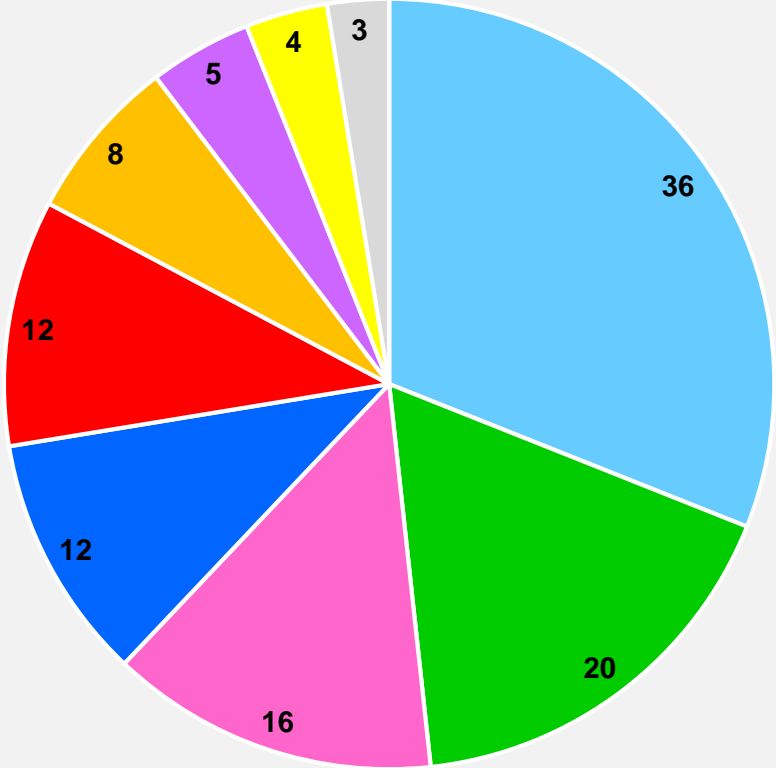
Represents the entire gas value chain



EASEE-gas membership by category

72 FULL MEMBERS

12 SERVICE PROVIDER MEMBERS



- Traders and Shippers
- Suppliers
- Storage System Operators
- LNG System Operators
- End-users
- Transmission System Operators
- Service Providers
- Producers
- Distribution System Operators
- Prosumers

EASEE-gas members across Europe

- Producer/ Production Facility Operator
- Transmission System Operator
- Distribution System Operator
- Storage System Operator
- LNG System Operator
- Trader & Shipper
- Supplier
- End-User / Final Customer
- Prosumer
- Service Provider



Mission

Deliver efficient and harmonised solutions that support business processes across the different actors in the gas value chain

Facilitate the transition to a sustainable and integrated energy system in Europe

Objectives

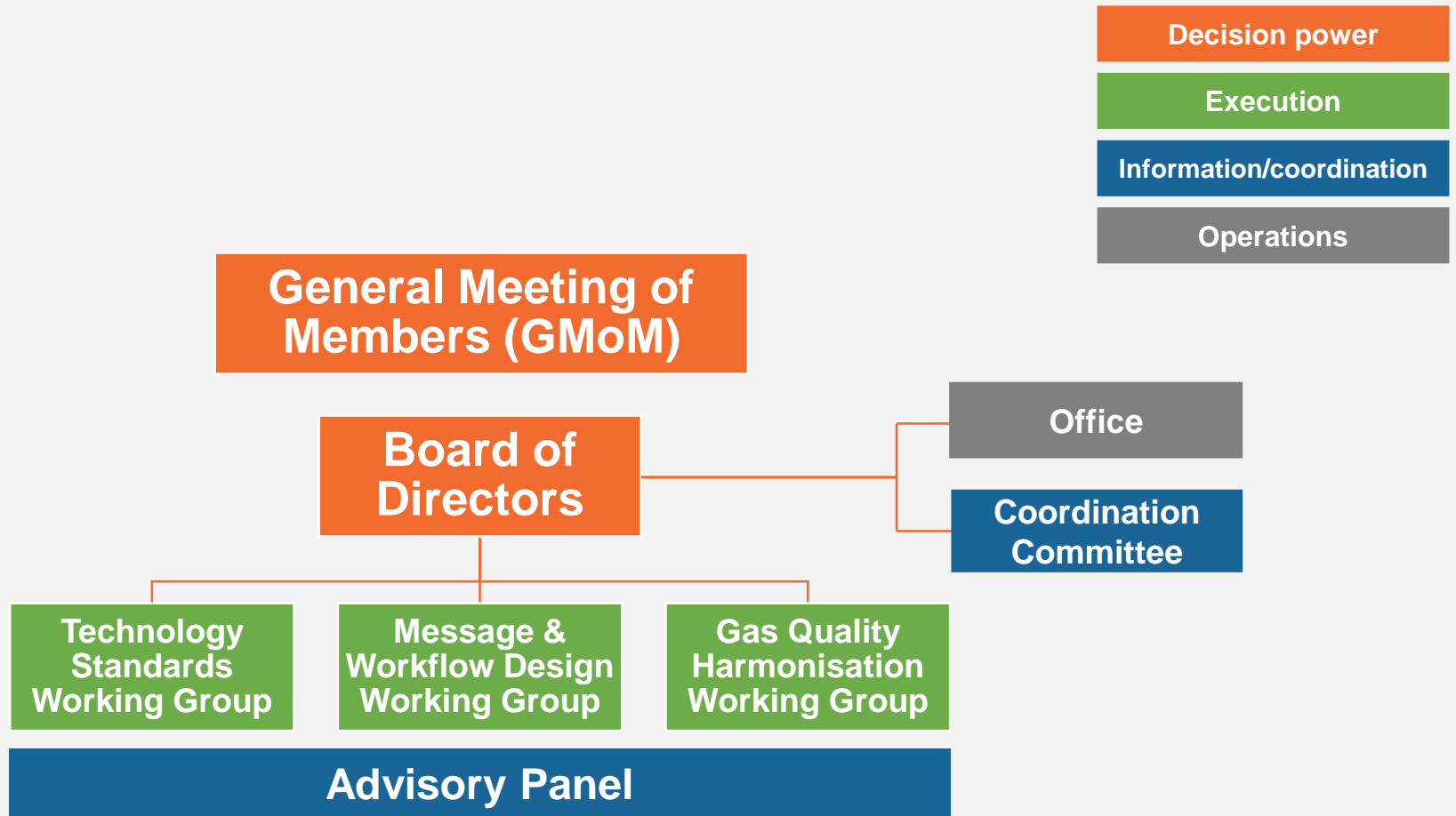
- Develop new and maintain existing business solutions that serve the needs of the gas value chain, bring additional efficiency and secure services in the sector
- Develop, maintain and promote data exchange standards for the energy sector
- Proactively advocate towards stakeholders and authorities for a wider implementation of both existing and the new EASEE-gas solutions by all players in the value chain

Objectives

Accelerate the transition towards tomorrow's energy system by facilitating the interoperability of energy systems

Interact with other stakeholders, by sharing information and establishing a dialogue on the further integration of the energy sector

Governing structure



Our groups of experts

Message and Workflow Design Working Group

Transcribes business requirements into message content or application definitions. The group is responsible for the upgrade and maintenance of Edig@s.

Technology Standards Working Group

Develops and supports communication standards for the exchange of gas business information between the various market players.

Gas Quality Harmonisation Working Group

Monitors all gas quality related topics and develops quality standards.



Strong collaboration with European partners



Participation in high-level discussions



Our solutions

Edig@s

Gas Role
Model

Security
certificates

EASEE-connect

Common Business
Practices

Widely used for the exchange of data via electronic means between gas players

Covers the major gas processes

Free of charge

Included in the EU Network Code for Interoperability and Data Exchange Rules (nomination & matching process)

Continuous improvement since 1996 when the first version was created - version 6 was released in 2020



The European message standard for the gas market

Our solutions

Edig@s

**Gas Role
Model**

Security
certificates

EASEE-connect

Common Business
Practices

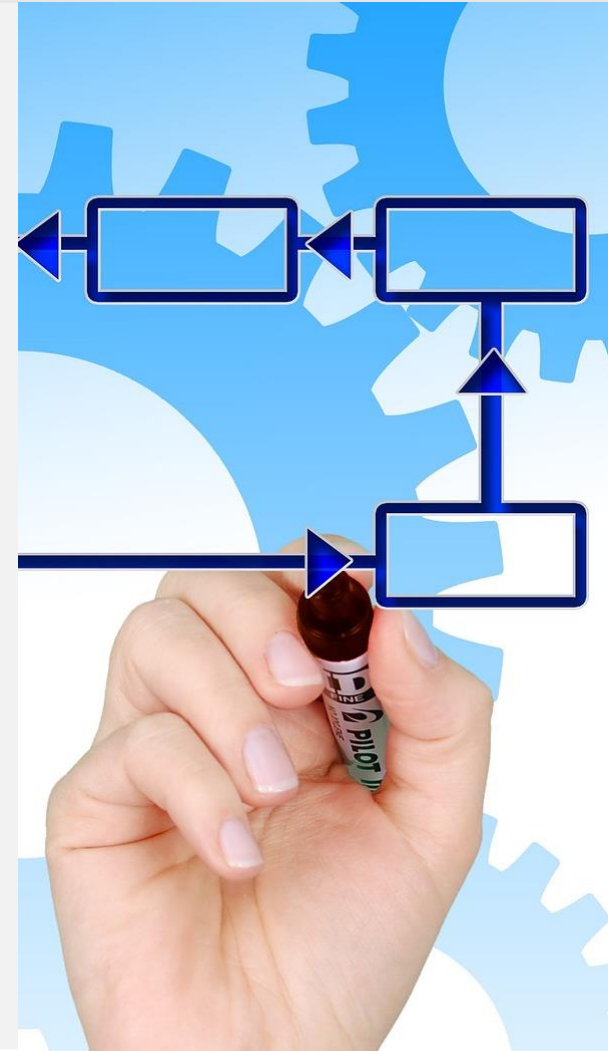
One single document describing the main actors and processes in the gas sector

Provides a common terminology for the roles that are used by most European countries

Written from a business process perspective

The result of a collaborative work with ENTSOG, Eurogas and other external stakeholders

Also available as a Common Business Practice



Our solutions

Edig@s

Gas Role
Model

**Security
certificates**

EASEE-connect

Common Business
Practices

EASEE-gas acts as a provider of digital certificates (AS2 and AS4) for its members helping them to save costs

Partnership with an EU Qualified Trust Service Provider

EASEE-gas takes care of their maintenance and renewal (every 3 years)

Increased efficiency for members



Our solutions

Edig@s

Gas Role
Model

Security
certificates

EASEE-connect

Common Business
Practices



EASEE-connect

The trusted platform for AS4/AS2 profiles

Developed for gas market participants to create and manage their AS2 and AS4 company profiles simply and securely

Offers many functionalities including:

- Management of own party and profile information
- Establishment of communication agreements with other parties
- Downloadable AS4 settings
- Development of address book of business connections

Companies save time and cost in operating connections

Available to members and non-members (fees apply)

Our solutions

Edig@s

Gas Role
Model

Security
certificates

EASEE-connect

**Common Business
Practices**

Common Business Practices (CBPs) are sets of recommendations on process handling, messages exchange and technology standards

More than 20 CBPs developed with the participation of experts from all gas industry segments

Most of the content of the CBPs was taken into account in the Network Codes drafted by ENTSOG



Benefits of joining EASEE-gas



Knowledge

Get involved in the work of the different EASEE-gas expert groups

Access the EASEE-gas library of documents and reports

Gain insights of the gas market trends and needs

Access first-hand information about high level discussions on the future of the energy market

Influence

Put issues on the agenda of the association

Give input to the EASEE-gas position papers and be part of to the gas quality debate

Have your say in the upgrade of current and development of future EASEE-gas solutions

Contribute to shaping the regulatory framework and the standardisation

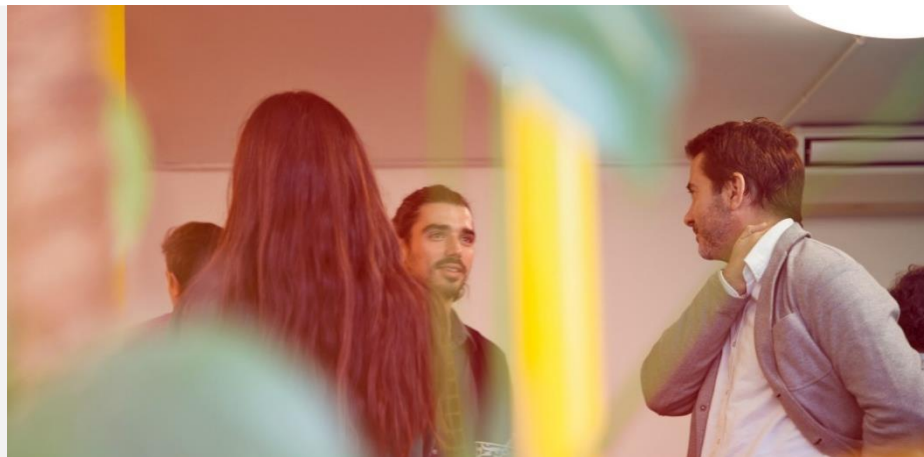


Benefits of joining EASEE-gas

Networking

Meet and build partnerships with European gas players from across Europe and the whole value chain

Participate in the General Meeting of Members and other events organised by the association



Member-only perks

Security certificates: full members get one security certificate for free with the possibility of purchasing additional ones

Access to EASEE-connect: members can manage up to 5 profiles free of charge and get the premium subscription at a discounted price

Bring changes to Edig@s-XML provided that these are beneficial for the majority of the members



Membership fees

Full member	EUR 5,200
-------------	-----------

Service Provider member	EUR 2,000
-------------------------	-----------

Ready to become a member?

Submit your application form via the EASEE-gas website

easee-gas.eu/membership-application-form

Need more information? Get in touch

Contact our office in Brussels:

188a Avenue de Tervueren, 1150 Brussels

+ 32 2 761 16 33

easee-gas@kellencompany.com





EASEE-gas

Streamlining the gas business

Follow us on 